

SINGLE USE KIT

STERILE R



NEWCLIP
TECHNICS

INITIAL

Xpert 2.4
Fragment Specific

With a non sterile standard kit



Calling on medical staff

Constraints > **Complex traceability** + **Contracted out sterilization** + **Suppliers' deadline**

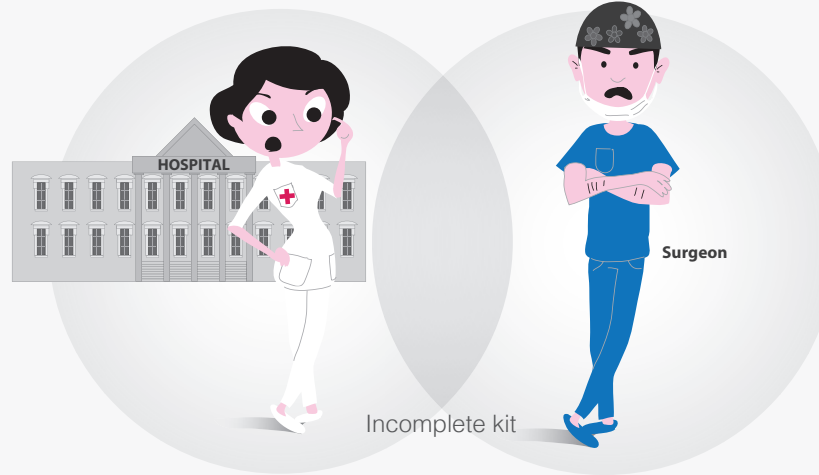
High costs



- \$ Stocks
- \$ Control
- \$ Cleaning
- \$ Decontamination
- \$ Sterilization



Bulky storage



Incomplete kit

Surgeon

Complex process



Prevents an effective solution & a quick response



Defective sterilization



Incomplete kit



Damaged instrumentation



INCREASED RISKS
NON OPTIMAL surgery



URGENT SURGICAL CASES COMPROMISED

Safety >

TRACEABILITY
100%



STERILE R
SINGLE USE KIT



**Always
NEW**



**Risk
of contamination**

Cost efficiency



Controlled stocks
Simplified control

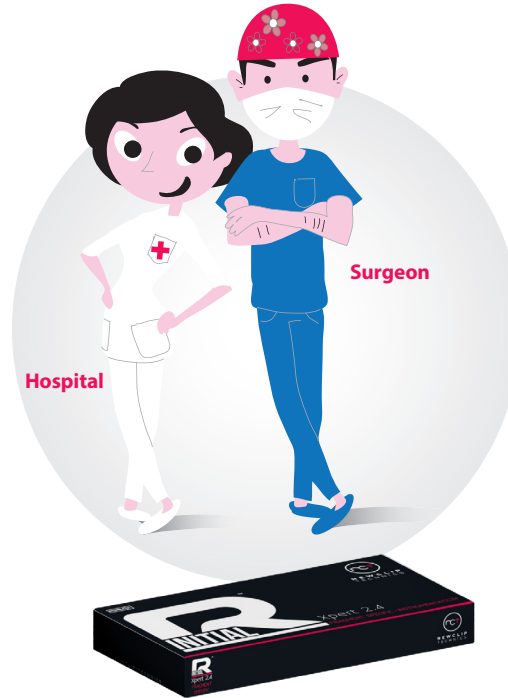
- 0** Cleaning
- 0** Decontamination
- 0** Sterilization



**Sundry
expenses**



Optimized storage



Efficiency



- 1** Delivery
- 2** Storage
- 3** Surgery



An effective solution & a quick response



Available when needed



**READY-TO-USE FOR
SURGERY**

**+ Optimized handling of
URGENT SURGICAL CASES**

Ready
when you are!

STERILE R SINGLE USE KIT
with state-of-the-art implants



Available when needed:

The Initial R™ Xpert 2.4 fragment specific kit comes pre-sterilized and ready to use. The combination of sterile implants and single use instrumentation in a single packaging makes Initial R™ Xpert 2.4 ideal for use in urgent surgical cases.



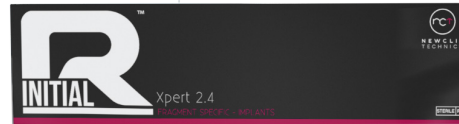
Safety:

The Initial R™ Xpert 2.4 fragment specific kit is fully traceable and has a shelf life of 5 years. Its instrumentation and implants are “always new” and have never been opened or used before.



Storage:

Initial R™ Xpert 2.4 fragment specific kit can be easily stored in the operating room because of its small size.



Costs:

Initial R™ Xpert 2.4 fragment specific is a cost-effective solution. The additional costs including cleaning, decontamination, sterilization of kits are cancelled.



Contamination:

The combination of implants and sterile single-use instrumentation minimizes contamination risks.



Buying procedure:

Initial R™ Xpert 2.4 fragment specific facilitates buying procedures: restocking and orders are simplified, stock management is optimized.

Kit content



> Intended purpose

The implants of the Initial R™ Xpert range are intended for fixation of hand and forearm fractures, osteotomies and arthrodeses in adults.

> Contraindications

- Pregnancy.
- Acute or chronic local or systemic infections.
- Allergy to one of the materials used or sensitivity to foreign bodies.

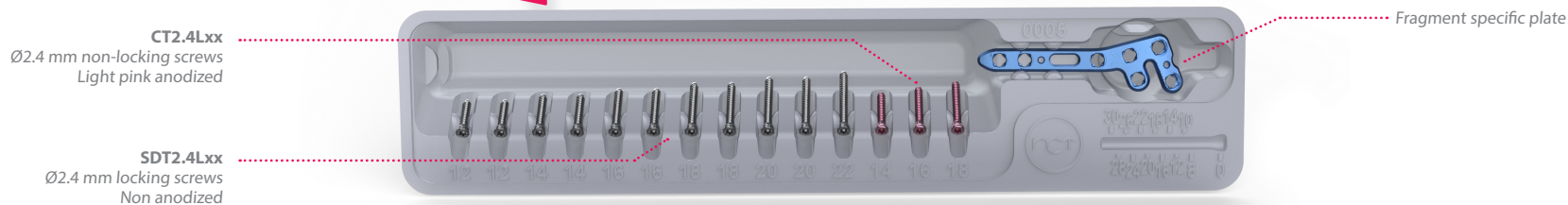
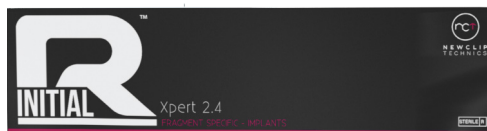
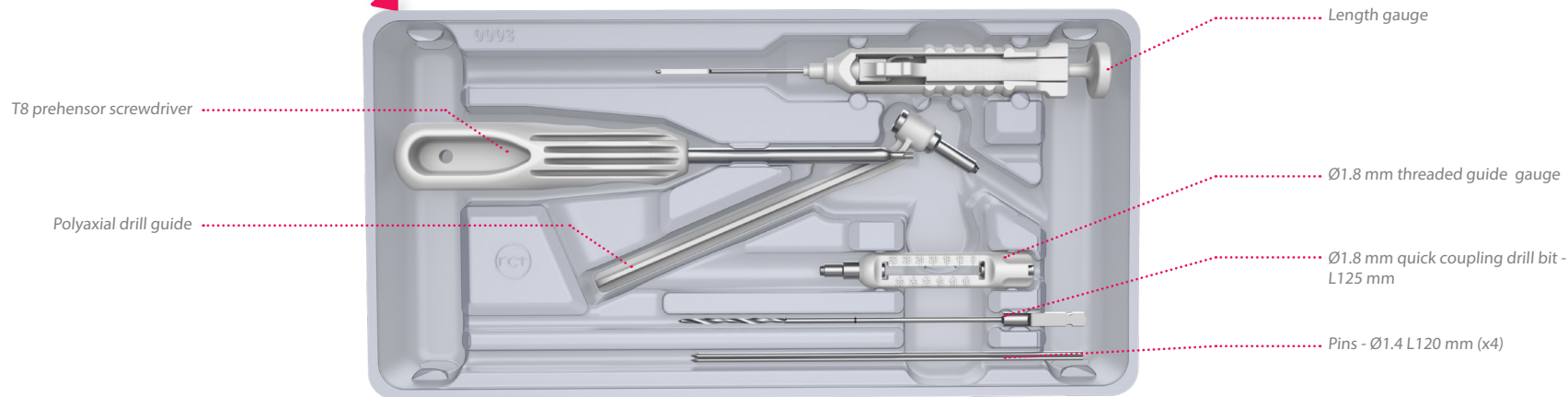
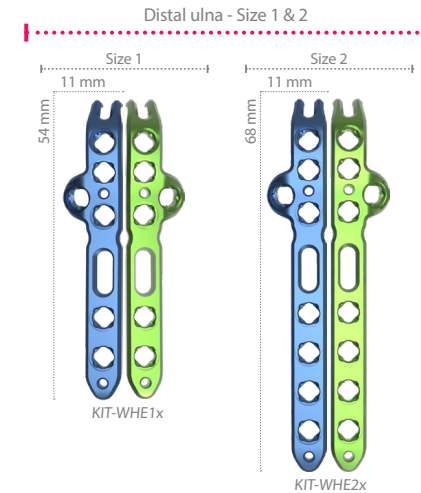


Plate features

> A wide range of plates

Kits available for 6 different types of plates dedicated for various distal radius and distal ulna fractures.



Please note that the «x» in the reference represents the side of the implant and has to be replaced by «G» for left kits or «D» for right kits.

Screw and fixation features

> Polyaxial and monoaxial locking fixation – Ø2.4 mm

- > Ø2.4 mm screws only.
- > Hexalobular screw head design.
- > Patented polyaxial locking platform $\pm 10^\circ$ thanks to the use of the polyaxial drill guide



When using the polyaxial drill guide, make sure that the guide is secured in the hole to avoid over angulation of the drilling, which could result in a failure of the locking mechanism.

- > Screw length from 12 to 22 mm (other sterile screw lengths available on demand - see page 11).
- > Ø1.8 mm sterile screw pegs (BDT1.8Lxx-ST are available on demand - see page 11).



Ref: BDT1.8Lxx-ST

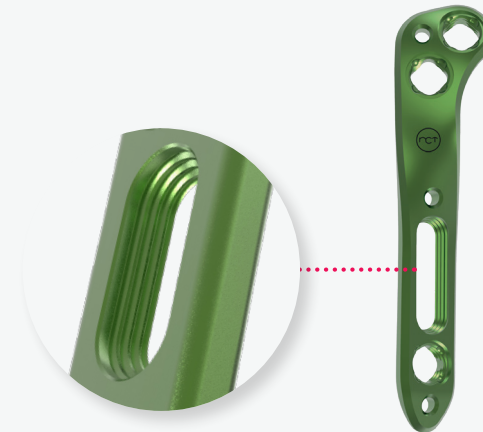


Final tightening of the screws must be performed by hand.



> Locking oblong hole – Ø2.4 mm locking and non-locking screws

The locking oblong hole is compatible with the Ø2.4 mm locking screws (SDT2.4Lxx) and the Ø2.4 mm non-locking screws (CT2.4Lxx).



Templates

The Initial R™ Xpert 2.4 Fragment Specific templates have been designed to determine quickly and simply the appropriate Xpert Wrist 2.4 Fragment Specific plate. Templates are divided into distinct groups (see table below).

STERILE TEMPLATES*

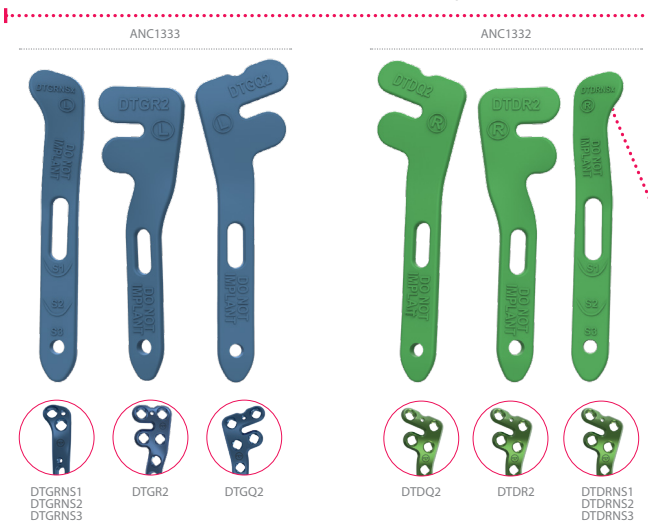
Ref.	Description
For radial column plates	
ANC1331	Template for distal & latero-dorsal radial column plates - Distal radius - Sizes 1-2-3 (DETSLx/DETFx/DETFx)
For dorso-medial & dorso-lateral plates	
ANC1332	Templates for dorso-medial & dorso-lateral plates - Distal radius - Right - Sizes 1-2-3 (DTRNS1-2-3/DTR2/DTQ2)
ANC1333	Templates for dorso-medial & dorso-lateral plates - Distal radius - Left - Sizes 1-2-3 (DTGRNS1-2-3/DTGR2/DTGQ2)
For distal ulna plates	
ANC1334	Template for distal ulna plates - Right - Sizes 1-2 (HTDE1-2)
ANC1335	Template for distal ulna plates - Left - Sizes 1-2 (HTGE1-2)

* Available in sterile packaging - Single use kit.

For radial column and latero-dorsal plates

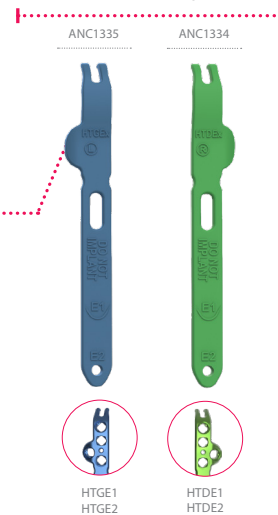


For dorso-medial and dorso-lateral plates



Each template is marked with associated plate(s) references to easily identify the corresponding Initial R™ Xpert 2.4 Fragment specific kit.

For distal ulna plates



Surgical technique

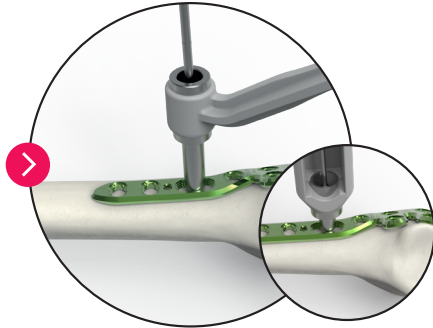
Example: surgical technique with a dorso medial plate

This technique is applicable for all the plates of the Initial R Xpert 2.4 Fragment Specific range.



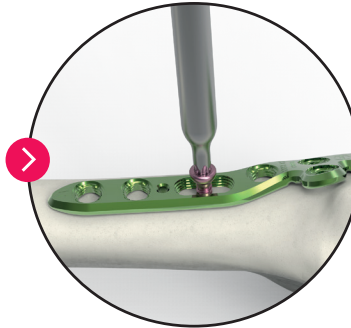
Determine the plate size thanks to the templates, then choose the suitable kit. Afterwards, stabilize the fracture, then position the plate.

For insertion of non-locking screws



1. Position the plate. Insert the polyaxial drill guide into the oblong hole and perform the drilling.

Determine the screw length using the length gauge.

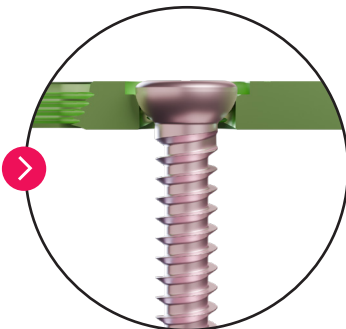


2. Insert the Ø2.4 mm pink non-locking screw (CT2.4Lxx) into the oblong hole using the screwdriver.

N.B.: In the case of poor bone quality, a Ø2.4 mm locking screw (SDT2.4Lxx) can be inserted.



3. The screw is inserted with a three-finger grip, providing sufficient insertion torque.



4. Secure insertion is achieved when the screw head is flush to the surface of the plate.



Final result

Proceed with the monoaxial technique (or polyaxial technique if need be) for the remaining holes.

Surgical technique

Example: surgical technique with a dorso medial plate

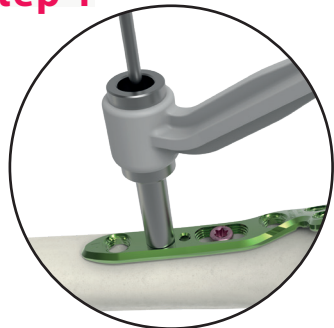
This technique is applicable for all the plates of the Initial R Xpert 2.4 Fragment Specific range.



Determine the plate size thanks to the templates, then choose the suitable kit. Afterwards, stabilize the fracture, then position the plate.

For insertion of locking screws

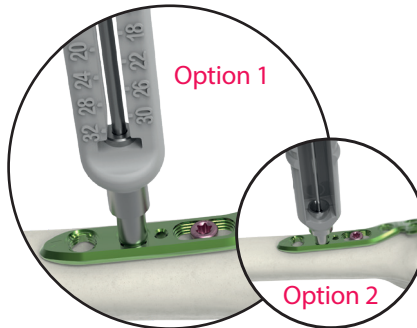
Step 1



Polyaxial technique

A. Insert the polyaxial drill guide into the polyaxial locking hole and perform the drilling. Determine the screw length using the length gauge.

OR

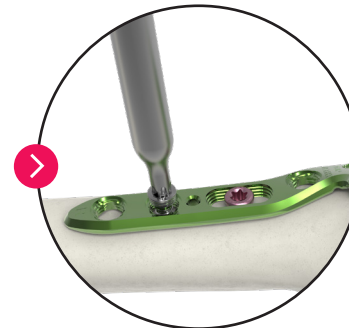


Monoaxial technique

B. Insert the threaded guide gauge into the polyaxial locking hole and perform the drilling.

Option 1: Determine the screw length using the drill bit and guide gauge.

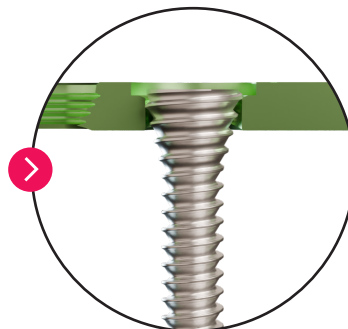
Option 2: Determine the screw length using the length gauge.



2. Insert a $\varnothing 2.4$ mm non anodized locking screw (ST2.4Lxx) using the screwdriver. Repeat the same procedure for the remaining locking holes.



3. The screw is locked with a three-finger grip, providing sufficient insertion torque.



4. Secure locking is achieved when the screw head is flush to the surface of the plate.



Final result

Proceed with the monoaxial technique (or polyaxial technique if need be) for the remaining holes.

References

INITIAL R™ XPert - FRAGMENT SPECIFIC - KITS

Ref.	Description
KIT-WRNS2D	Dorso-medial kit - Implants only - Distal radius - Extra Narrow - Size 2 - Right
KIT-WRNS2G	Dorso-medial kit - Implants only - Distal radius - Extra narrow - Size 2 - Left
KIT-WR2D	Dorso-medial kit - Implants only - Distal radius - Size 2 - Right
KIT-WR2G	Dorso-medial kit - Implants only - Distal radius - Size 2 - Left
KIT-WQ2D	Dorso-lateral kit - Implants only - Distal radius - Size 2 - Right
KIT-WQ2G	Dorso-lateral kit - Implants only - Distal radius - Size 2 - Left
KIT-WEF2D	Latero-dorsal radial column kit - Implants only - Distal radius - Size 2 - Right
KIT-WEF2G	Latero-dorsal radial column kit - Implants only - Distal radius - Size 2 - Left
KIT-WEL2S	Radial column kit - Implants only - Distal radius - Size 2 - Symmetrical
KIT-WHE1D	Distal ulna kit - Implants only - Size 1 - Right
KIT-WHE1G	Distal ulna kit - Implants only - Size 1 - Left
KIT-WHE2D	Distal ulna kit - Implants only - Size 2 - Right
KIT-WHE2G	Distal ulna kit - Implants only - Size 2 - Left

INITIAL R™ XPert - INSTRUMENTATION

Ref.	Description
KIT-INSTRUM-1	Instrumentation kit for distal radius & distal ulna implants

INITIAL R™ XPert - INSTRUMENTATION CONTENT

Description	Qty
Pins - Ø1.4 L 120 mm	4
T8 prehensor screwdriver	1
Length gauge	1
Ø1.8 mm quick coupling drill bit - L 125 mm	1
Ø1.8 mm threaded guide gauge	1
Non threaded polyaxial drill guide	1

INITIAL R™ XPert 2.4 FRAGMENT SPECIFIC - IMPLANTS CONTENT

Ref.	Description	QUANTITY PER KIT						
		KIT-WRNS2D or KIT-WRNSG	KIT-WR2D or KIT-WR2G	KIT-WQ2D or KIT-WQ2G	KIT-WEL2S	KIT-WEF2D or KIT-WEF2G	KIT-WHE1D or KIT-WHE1G	KIT-WHE2D or KIT-WHE2G
DORSAL PLATES	DTGRNS2 or DTDRNS2	Dorso-medial plate - Distal radius - Extra Narrow - Size 2 - Left or Right	1	-	-	-	-	-
	DTGR2 or DTDR2	Dorso-medial plate - Distal radius - Size 2 - Left or Right	-	1	-	-	-	-
	DTGQ2 or DTDQ2	Dorso-lateral plate - Distal radius - Size 2 - Left or Right	-	-	1	-	-	-
RADIAL COLUMN PLATES	DETSL2	Distal radial column plate - Distal radius - Symmetrical - Size 2	-	-	-	1	-	-
	DETF2 or DETDF2	Latero-dorsal radial column plate - Distal radius - Left - Size 2	-	-	-	-	1	-
ULNAR PLATES	HTGE1 or HTDE1	Distal ulna plate - Size 1 - Left or Right	-	-	-	-	-	1
	HTGE2 or HTDE2	Distal ulna plate - Size 2 - Left or Right	-	-	-	-	-	1
LOCKING SCREWS Ø2.4 MM	SDT2.4L12	Ø2.4 mm locking screw - L12 mm	2	2	2	2	2	2
	SDT2.4L14	Ø2.4 mm locking screw - L14 mm	2	2	2	2	2	2
	SDT2.4L16	Ø2.4 mm locking screw - L16 mm	2	2	2	2	2	2
	SDT2.4L18	Ø2.4 mm locking screw - L18 mm	2	2	2	2	2	2
	SDT2.4L20	Ø2.4 mm locking screw - L20 mm	2	2	2	2	2	2
	SDT2.4L22	Ø2.4 mm locking screw - L22 mm	1	1	1	1	1	1
NON-LOCKING SCREWS Ø2.4 MM	CT2.4L14	Ø2.4 mm non-locking screw - L14 mm	1	1	1	1	1	1
	CT2.4L16	Ø2.4 mm non-locking screw - L16 mm	1	1	1	1	1	1
	CT2.4L18	Ø2.4 mm non-locking screw - L18 mm	1	1	1	1	1	1

In case of a combined use of an INITIAL R™ Xpert - Fragment specific kit with a «standard» INITIAL R™ Xpert kit, the instrumentation is included. Thus, the kit of instrumentation KIT-INSTRUM-1 is not required.



+



=

Complete solution



INITIAL R™ Xpert - Fragment specific instrumentation kit

References

Additional implants

Sterile screws packaged in the supplemental sterile screw caddy

LOCKING SCREWS - Ø2.4 mm*

Ref.	Description	Qty
SDT2.4L10-ST	Ø2.4 mm locking screw - L10 mm - STERILE	2
SDT2.4L12-ST	Ø2.4 mm locking screw - L12 mm - STERILE	2
SDT2.4L14-ST	Ø2.4 mm locking screw - L14 mm - STERILE	2
SDT2.4L16-ST	Ø2.4 mm locking screw - L16 mm - STERILE	2
SDT2.4L18-ST	Ø2.4 mm locking screw - L18 mm - STERILE	3
SDT2.4L20-ST	Ø2.4 mm locking screw - L20 mm - STERILE	3
SDT2.4L22-ST	Ø2.4 mm locking screw - L22 mm - STERILE	2
SDT2.4L24-ST	Ø2.4 mm locking screw - L24 mm - STERILE	2
SDT2.4L26-ST	Ø2.4 mm locking screw - L26 mm - STERILE	2
SDT2.4L28-ST	Ø2.4 mm locking screw - L28 mm - STERILE	1

*Not anodized

NON-LOCKING SCREWS - Ø2.4 mm*

Ref.	Description	Qty
CT2.4L10-ST	Ø2.4 mm non-locking screw - L10 mm - STERILE	1
CT2.4L12-ST	Ø2.4 mm non-locking screw - L12 mm - STERILE	2
CT2.4L14-ST	Ø2.4 mm non-locking screw - L14 mm - STERILE	2
CT2.4L16-ST	Ø2.4 mm non-locking screw - L16 mm - STERILE	2
CT2.4L18-ST	Ø2.4 mm non-locking screw - L18 mm - STERILE	2
CT2.4L20-ST	Ø2.4 mm non-locking screw - L20 mm - STERILE	1
CT2.4L22-ST	Ø2.4 mm non-locking screw - L22 mm - STERILE	1
CT2.4L24-ST	Ø2.4 mm non-locking screw - L24 mm - STERILE	1
CT2.4L26-ST	Ø2.4 mm non-locking screw - L26 mm - STERILE	1
CT2.4L28-ST	Ø2.4 mm non-locking screw - L28 mm - STERILE	1

*Pink anodized

Removal kit

Sterile instrument

REMOVAL KIT

Ref.	Description	Content
KIT-REMOVE-2	Removal kit for T8 hexalobe	T8 prehensor screwdriver



Supplemental instrumentation kits

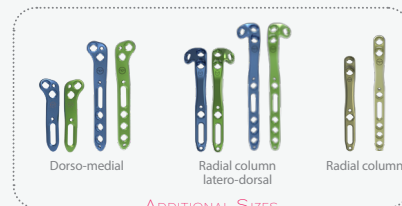
Additional implants on demand

LOCKING SCREW PEGS - Ø1.8 mm*

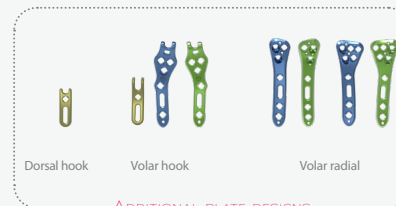
Ref.	Description
BDT1.8L14-ST	Ø1.8 mm locking screw peg - L14 mm - STERILE
BDT1.8L16-ST	Ø1.8 mm locking screw peg - L16 mm - STERILE
BDT1.8L18-ST	Ø1.8 mm locking screw peg - L18 mm - STERILE
BDT1.8L20-ST	Ø1.8 mm locking screw peg - L20 mm - STERILE
BDT1.8L22-ST	Ø1.8 mm locking screw peg - L22 mm - STERILE
BDT1.8L24-ST	Ø1.8 mm locking screw peg - L24 mm - STERILE
BDT1.8L26-ST	Ø1.8 mm locking screw peg - L26 mm - STERILE

*Blue anodized

You can find our other Xpert Wrist Fragment Specific plates & screws in individual sterile packaging



ADDITIONAL SIZES



ADDITIONAL PLATE DESIGNS



S-Box (sterile screws)

For more information, please refer to the Xpert Wrist 2.4 - Fragment Specific brochure

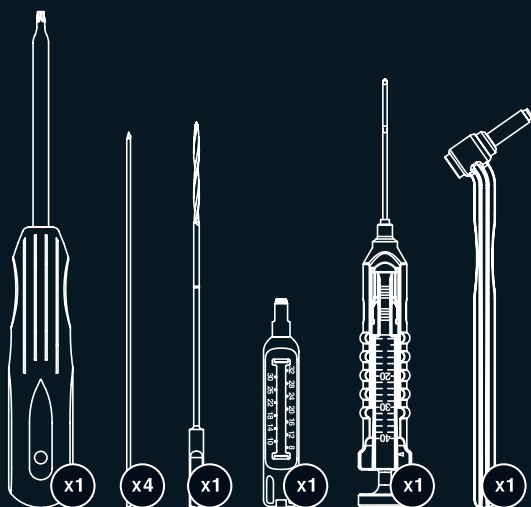
This information is intended to demonstrate the Newclip Technics portfolio of medical devices. Always refer to the package insert, product label and/or user instructions before using any Newclip Technics product. These products must be handled and/or implanted by trained and qualified staff who have read the instructions before use. A surgeon must always rely on her or his own professional clinical judgement when deciding whether to use a particular product when treating a particular patient. Product availability is subject to the regulatory or medical practices that govern individual markets. Please contact your Newclip Technics representative if you have questions about the availability of Newclip Technics products in your area. Manufacturer : Newclip Technics – Brochure - EN – INITIAL R™ XPERT 2.4 FRAGMENT SPECIFIC – ED3 – 08/2025 - Medical device EC: class IIb – CE1639 SGS BE
Read labelling and instructions before the use of Newclip Technics medical devices. These products must be handled and/or implanted by trained and qualified staff who have read the instructions before use.

Non contractual pictures.

KIT-INSTRUM-1

Instrumentation kit for distal radius & distal ulna implants

Degree of accuracy for devices with a measuring function : ± 1.0 mm



Xpert 2.4

Fragment Specific



NEWCLIP TECHNICS
 45 rue des Garottières
 44115 Haute-Goulaine, France
 Tél.: +33 (0)2 28 21 37 12
 Fax : +33 (0)2 40 63 68 37
www.newcliptechnics.com



NEWCLIP TECHNICS (HQ)
 45 rue des Garottières
 44115 Haute Goulaine, France
 +33 (0)2 28 21 23 25
orders@newcliptechnics.com
www.newcliptechnics.com

NEWCLIP TECHNICS USA
 Newclip USA
 340 Tesconi Circle Suite A
 Santa Rosa CA 95401, USA
 +1 707 230 5078
customerservice@newclipusa.com
www.newcliptechnics.com

NEWCLIP TECHNICS IBERIA
 Calle Frederic Mompou 4b
 Sant Just Desvern
 08960 Barcelona, España
 +34 938 299 526
contact@newclipiberia.com
www.newcliptechnics.com

NEWCLIP TECHNICS GERMANY
 Newclip GmbH
 Pröllstraße 11
 D-86157 Augsburg, Deutschland
 +49 (0)821 650 749 40
info@newclipgmbh.com
www.newcliptechnics.com

NEWCLIP TECHNICS JAPAN
 Newclip Technics Japan K.K.
 KKK Bldg. 502, 3-18-1 Asakusabashi
 Taito-Ku, Tokyo, 111-0053, Japan
 +81 (0)3 58 25 49 81
 Fax: +81 (0)3 58 25 49 86
www.newcliptechnics.com

NEWCLIP TECHNICS AUSTRALIA
 Newclip Australia
 3B/11 Donkin Street
 West End 4101, Australia
 +61 (0)2 81 886 110
solutions@newclipaustralia.com
www.newcliptechnics.com